



Welcome to the Sunshine SFW Office

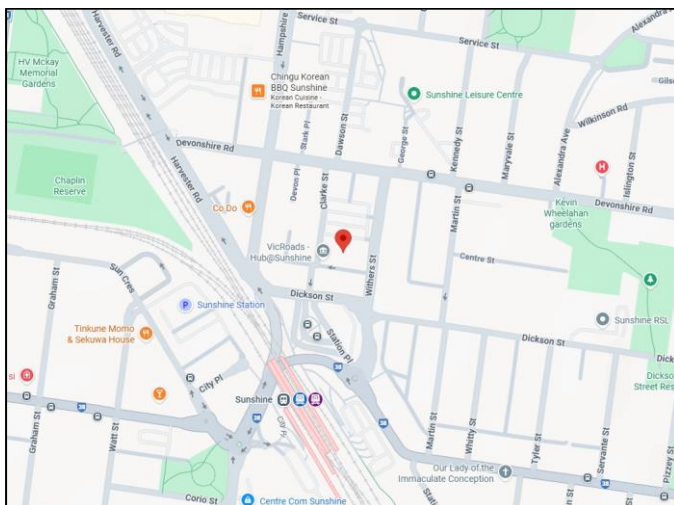
This page explains where to find us, parking options, and how to contact us.

Location Details:

Address: Office 5212, Level 5, 12 Clark Street
Sunshine VIC 3020

Where to find us inside the building:

We are located in a shared office space with NDIS, on level 5. Once you enter the building, go to level 5 via the lift. Once on level 5, ask reception for the Sign for Work office. Our office space is number 5212.



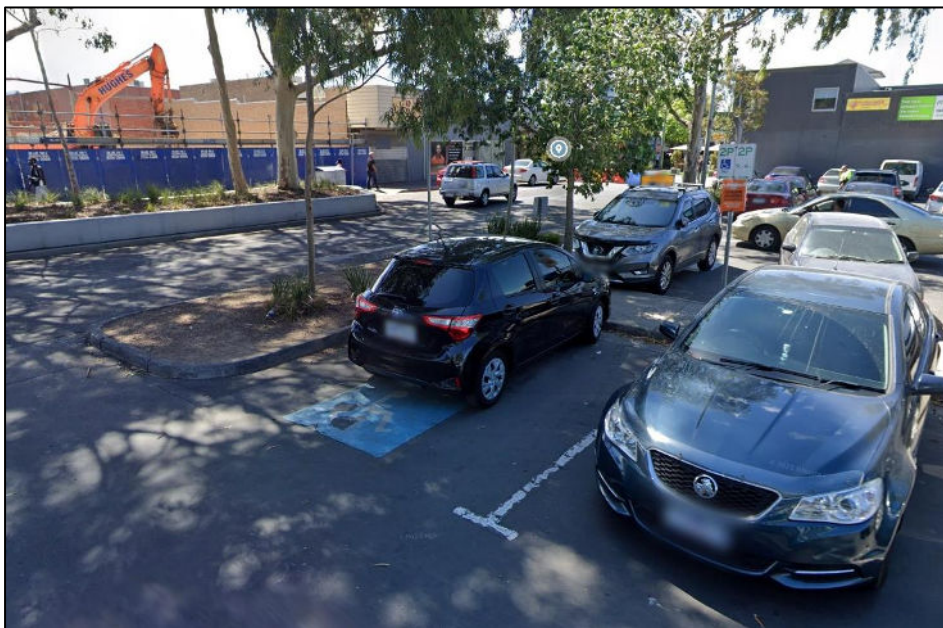
Parking & Transport

Parking:

There is a parking area located next to the building that is free and has 1 and 2 hour parking spaces available.

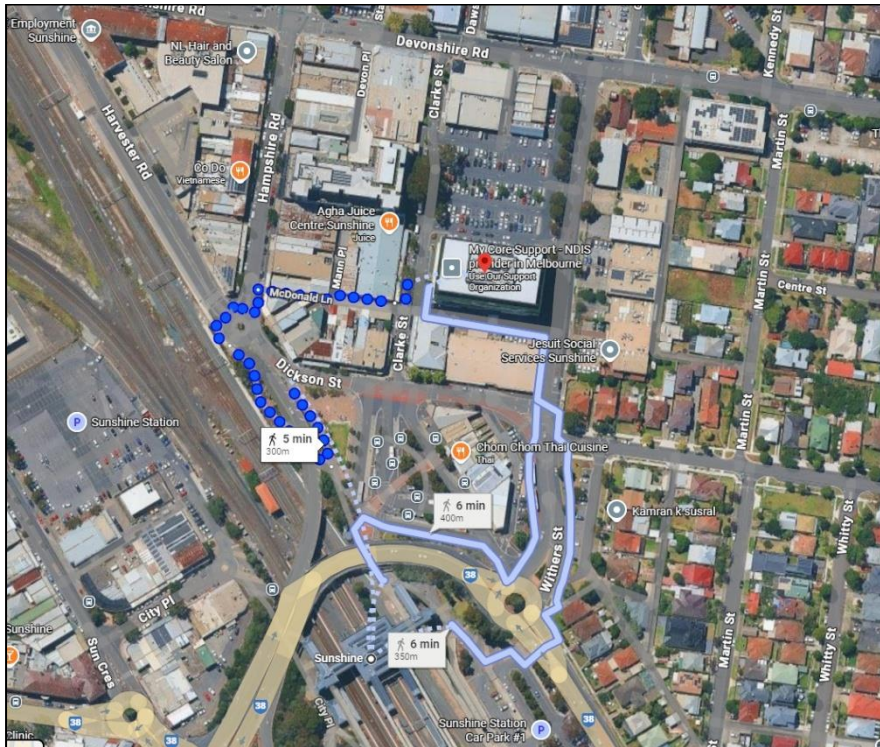


There are disabled parking spaces in the middle of the car park on the Clarke St side.



Public Transport:

Train: Sunshine Station, only a 5-minute walk away and is along the Ballart, Geelong and Sunbury Line.



Bus: Sunshine Station/Dickson St bus stop is only a 5-minute walk away, this bus stop is used by the 426 and 456 bus routes.



Opening Hours

We are onsite at this location by appointment.

Contact Us

Phone: 03 9539 5309

Mobile: 0429 372 068 (sms ONLY)

Email: info@signforwork.org.au

Website: signforwork.org.au

If you need help finding this site on the day, please call or text your Employment Coach.

Feedback, Compliments & Complaints

You can give feedback at any time.

Scan the QR code below or visit the DCA/IEA website.

