



Welcome to Southport Sign for Work Office

This page explains where to find us, parking options, and how to contact us.

Location Details

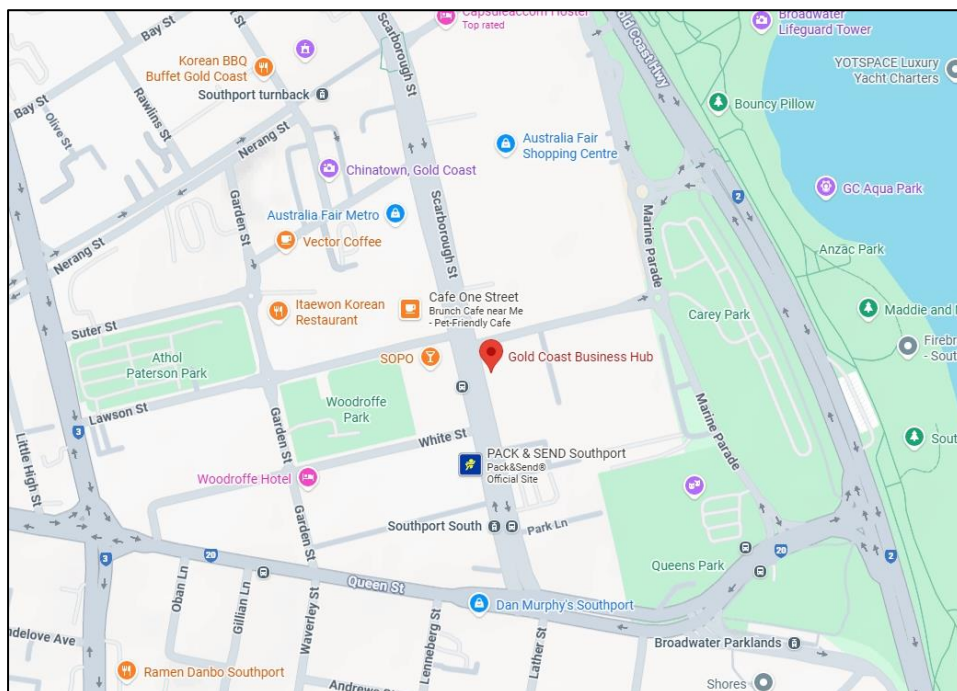
Address: Kay House, Level 2, 35/39 Scarborough St, Southport QLD 4215

Where to find us inside the building:

We are in a building called Kay House in Gold Coast Business Hub

Enter through the automatic doors and take the lift to level 2.

Look for the reception desk and ask for Sign For Work. They will let your Employment Coach know you are here and ask you to take a seat.



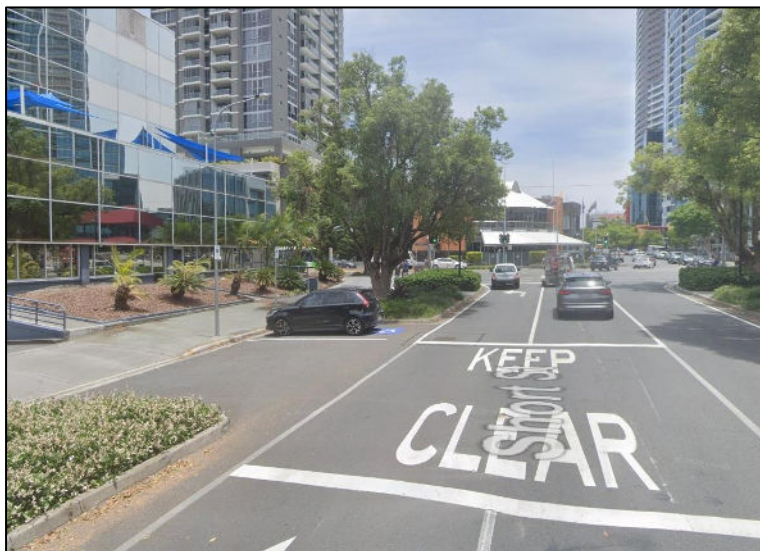
Parking & Transport

Parking:

There is 4 hour parking available on Short Street, around the corner from the office space.

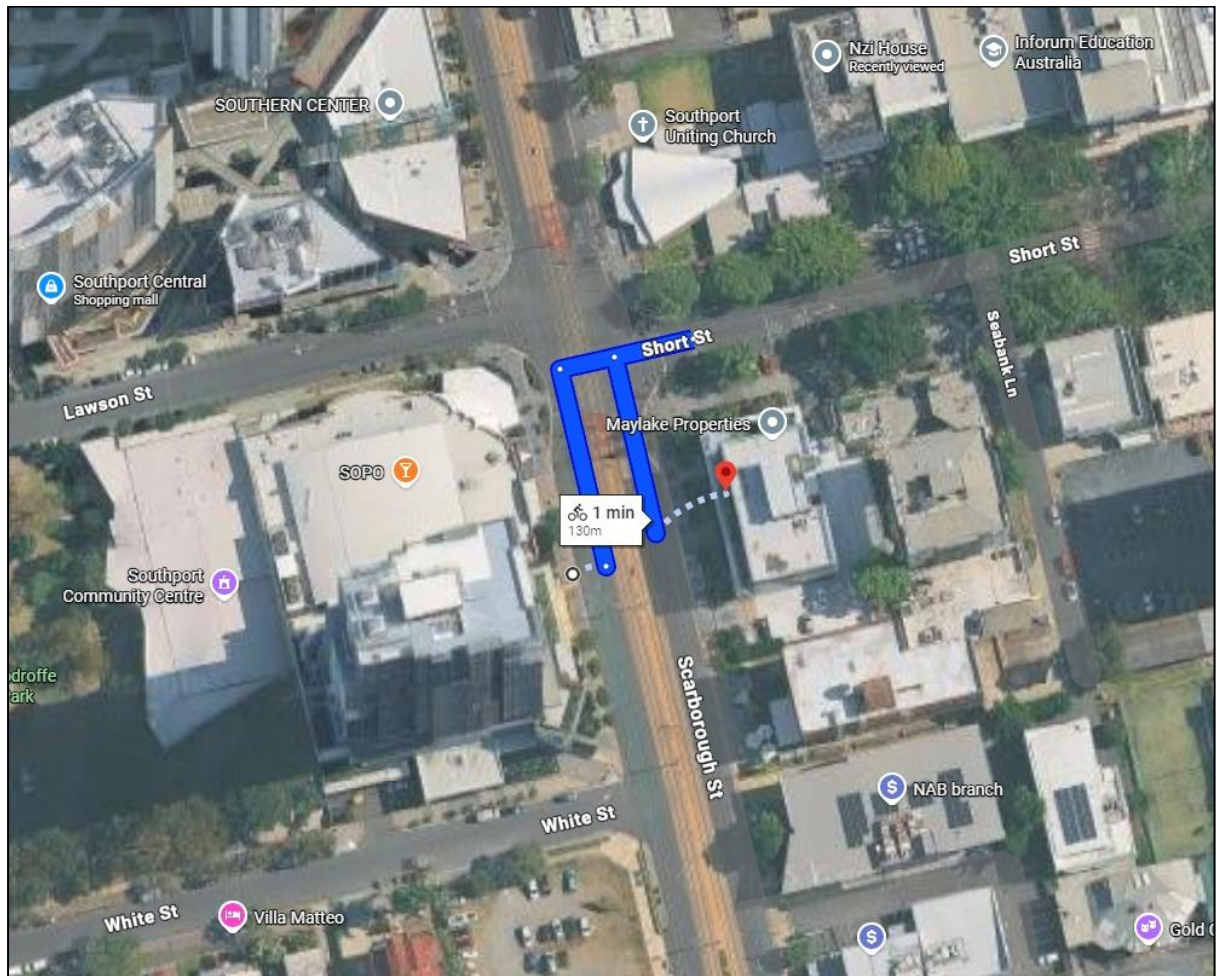


There is also disabled parking available on Short Street.



Public Transport:

Bus: Scarborough St at White Street, bus route 700, 704, 731, 737, 741, 742, and 747 are at this stop. It is directly across the road, so only a 2-minute walk.



Opening Hours

We are onsite at this location by appointment.

Contact Us

Phone: 07 3548 8918

Mobile: 0481 006 587

Email: info@signforwork.org.au

Website: signforwork.org.au

If you need help finding this site on the day, please call or text your Employment Coach.

Feedback, Compliments & Complaints

You can give feedback at any time.

Scan the QR code below or visit the DCA/IEA website.

